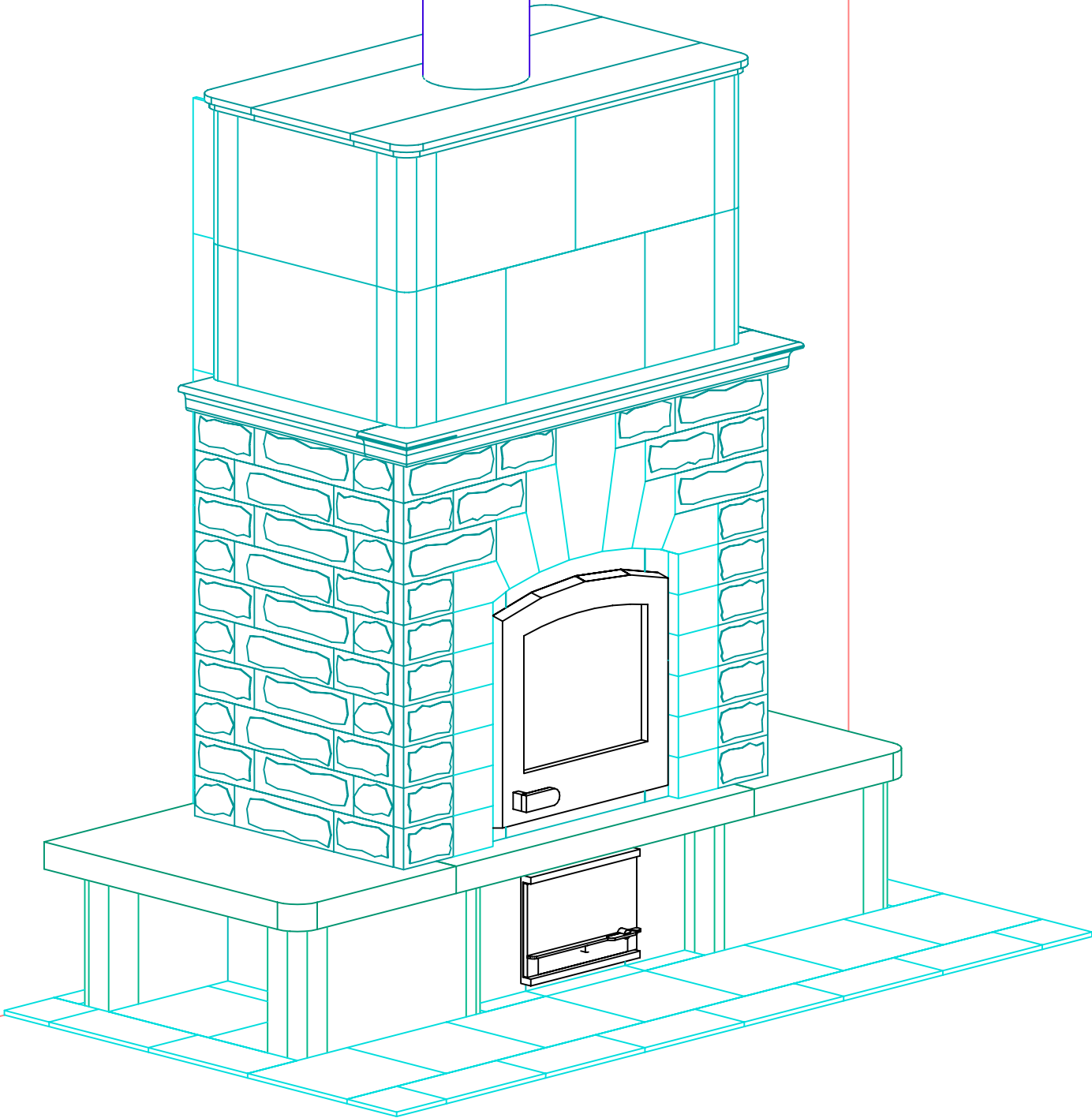


INFORMATION ONLY



NOTE: Hearth Tiles CUT AND INSTALLED by others



MID-ATLANTIC MASONRY HEAT
 1229 Harris Street Suite 1
 Charlottesville, VA 22903
 (434)979-9709 Fax 434-979-6416

PROJECT POERSCHKE
 MODEL TU2500L

CONTRACT 5722
 DRAWN BY J.CHAMPION

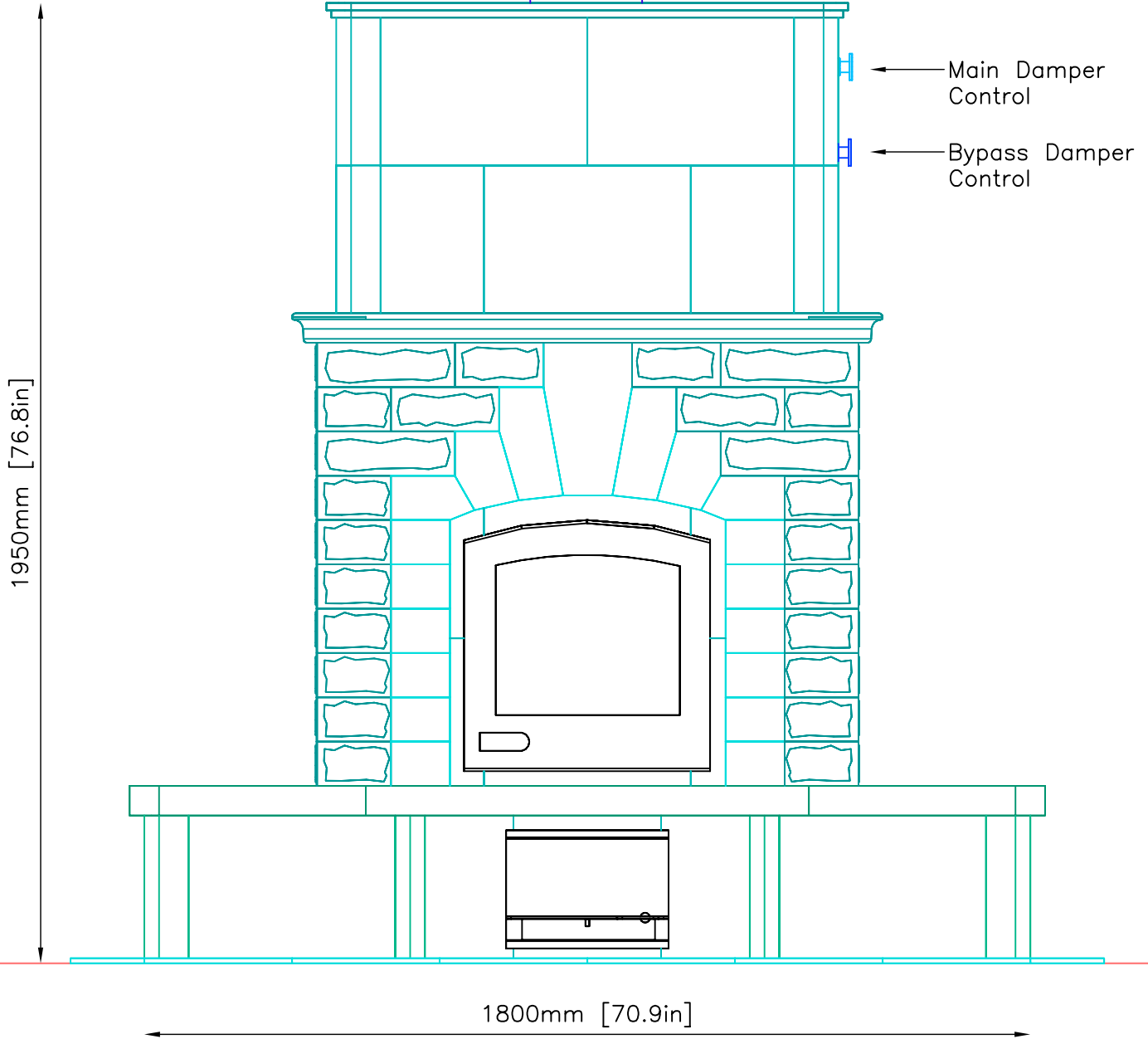
VIEW PERSPECTIVE
 DATE 04/07/05

PAGE 1

FRONT VIEW

INFORMATION ONLY

7" I.D./9" O.D. Double Wall
Stainless Steel Flue Pipe
by others →



NOTE: Hearth Tiles CUT AND INSTALLED by others



MID-ATLANTIC MASONRY HEAT
1229 Harris Street Suite 1
Charlottesville, VA 22903
(434)979-9709 Fax 434-979-6416

PROJECT POERSCHKE
MODEL TU2500L

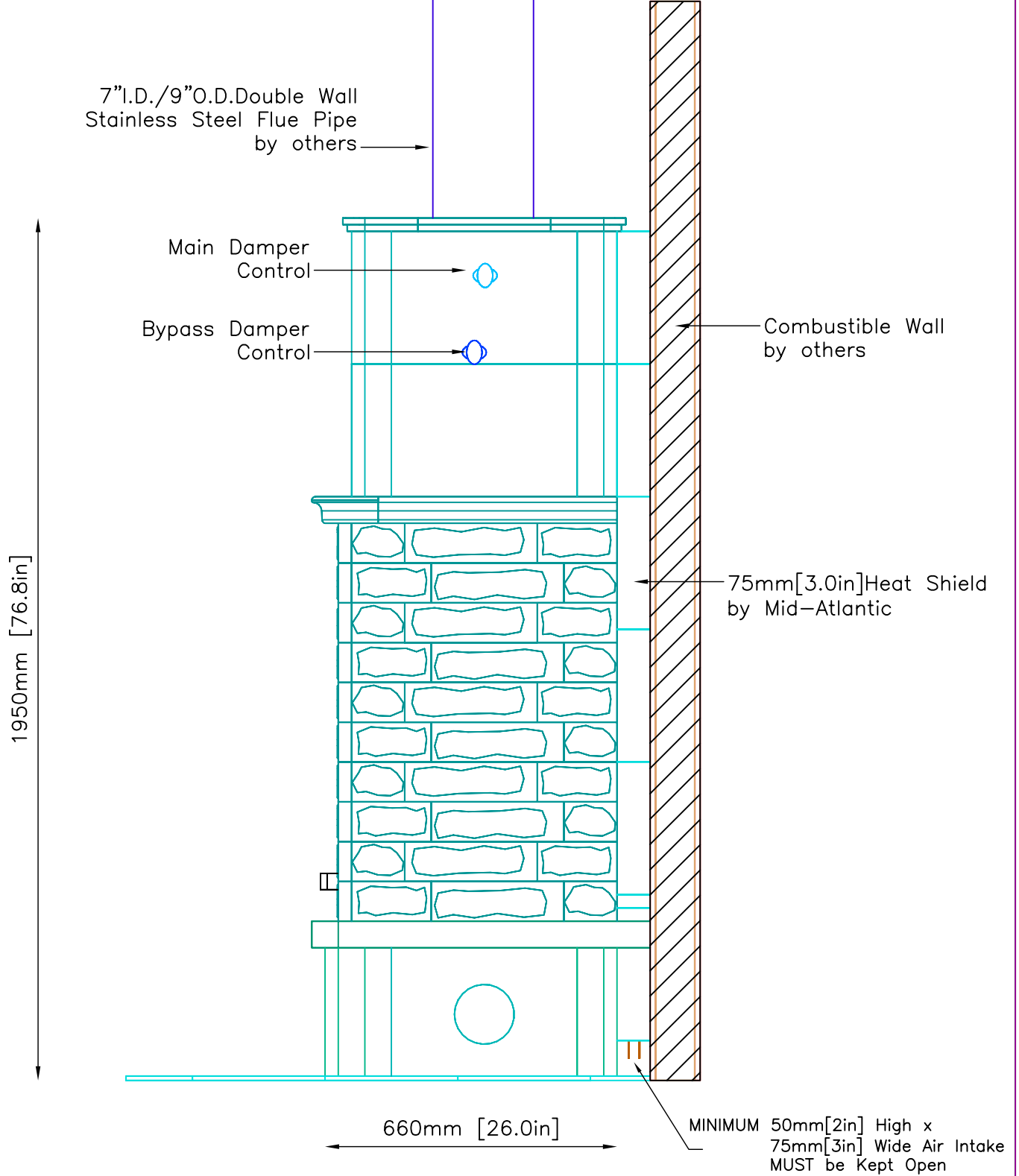
CONTRACT 5722
DRAWN BY J.CHAMPION

VIEW FRONT
DATE 04/07/05

PAGE

2

SIDE VIEW



NOTE: Hearth Tiles CUT AND INSTALLED by others

INFORMATION ONLY



MID-ATLANTIC MASONRY HEAT
1229 Harris Street Suite 1
Charlottesville, VA 22903
(434)979-9709 Fax 434-979-6416

PROJECT POERSCHKE
MODEL TU2500L

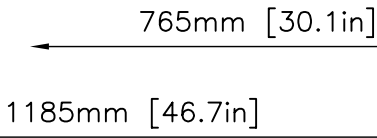
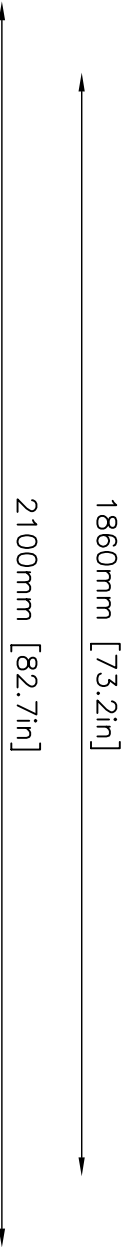
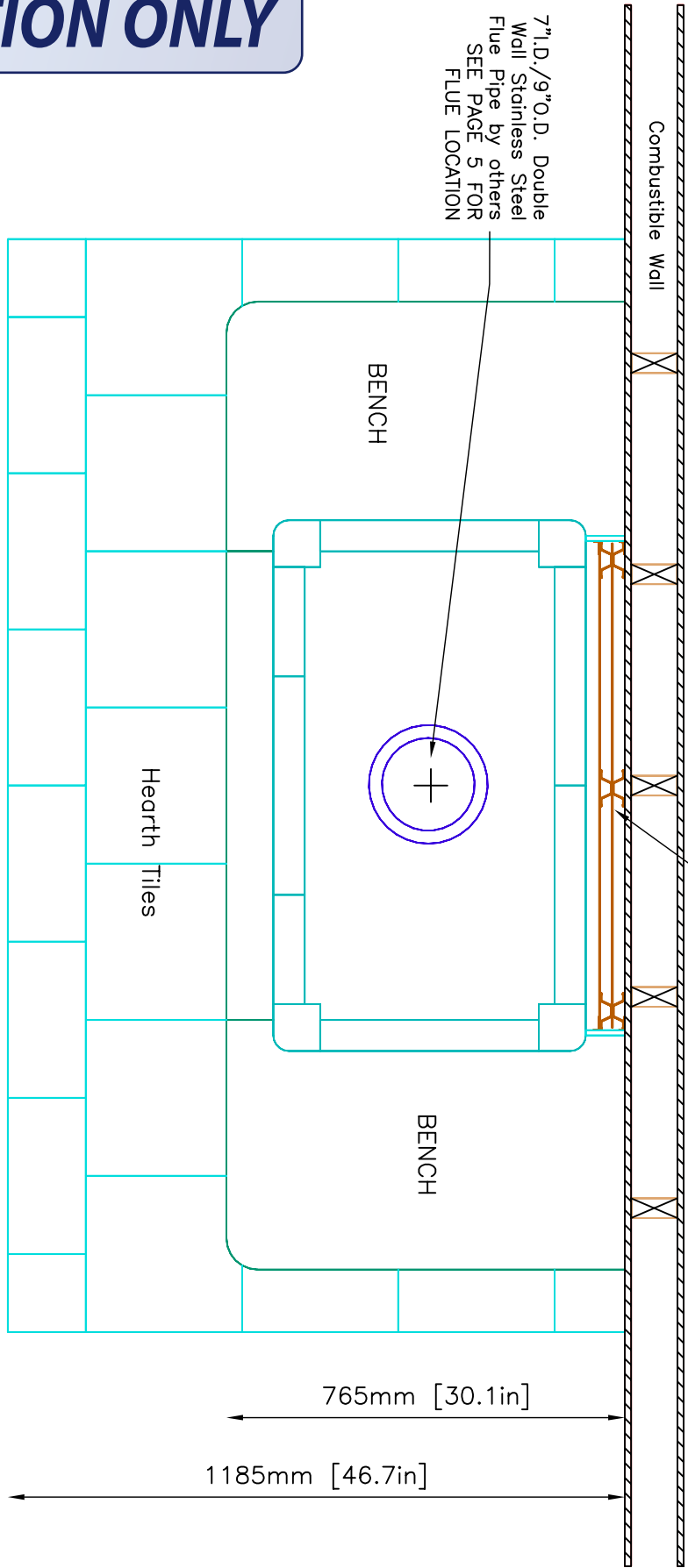
CONTRACT 5722
DRAWN BY J.CHAMPION

VIEW SIDE
DATE 04/07/05

PAGE 3

75mm [3.0in] Heat Shield
by Mid-Atlantic

7" I.D./9" O.D. Double
Wall Stainless Steel
Flue Pipe by others
SEE PAGE 5 FOR
FLUE LOCATION



INFORMATION ONLY

NOTE: Hearth Tiles CUT AND INSTALLED by others